



Inside CWM is published by Chicago White Metal Casting, and its CNC Technologies and Contract Manufacturing Divisions, for all of our employees and for our sales representatives and supplier partners who are equally vital to our success. Visit us at: www.cwmdiecast.com/ www.cnc-technology.com/ www.cwm-contractmfrg.com/
CWM is located near O'Hare Airport in Bensenville, IL U.S.A.

Committed to Total Customer Satisfaction
with CWM's ISO 9001 & ISO 14001 Registered
Management Systems: Excellence is Expected

Alex Ozog is Named '05 Employee of Year

By constantly suggesting ways to do things better, Aleksander Ozog, a member of the maintenance team, has earned the title of CWM's 2005 Employee of the Year.

Plant-wide Value Solution Initiatives

Frequently his improvement initiatives have resulted in important value solutions for CWM. For example, he recently found the root cause for temperature variations in the main aluminum furnace.

He also has jump-started the preventive maintenance program in both the magnesium and aluminum departments,

working toward better machine performance, fulfillment of delivery commitments, and improved lead times for customers.

Alex began working for CWM in 1988. ■



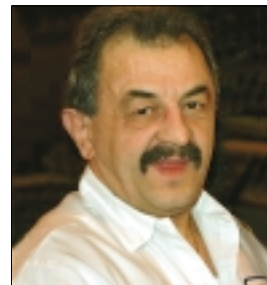
Aleksander Ozog

10 Veterans Receive 10- to 25-year Chicago White Metal '05 Service Awards

Ten CWMers were presented with 2005 service awards at the company's annual Awards Ceremony.

25 Year Service Honorees

Two members of the Production Department, Jozef Straczek and Donat Jaglowski, were honored for 25 years of Chicago White Metal service. Jozef joined CWM one month earlier than Donat in 1980.



Jozef Straczek, 25 yrs.



Donat Jaglowski, 25 yrs.

15 Year Service Honorees

Honored for 15 years of service were Juan Gonzalez, CNC Division; Ryszard Janeczek, Production Department; Gustavo Martinez, CNC Division; Anna Twarowski, Secondary Machining Department.

10 Year Service Honorees

Honored for 10 years with CWM were Glenda Baker, Secondary Machining Department;

(Continued on page 3)

Walter Treiber Leads International Magnesium Association to Its First Conference in China

In pursuit of the goal of the International Magnesium Assn. to promote wider worldwide use of magnesium, the IMA will hold its 63rd Annual World Magnesium Conference in May in Beijing, China, jointly organized by the China Magnesium Assn. Walter Treiber, CWM CEO, will be leading this international industry conclave of lectures and exhibits as the IMA's president.

Building the Die Cast Mg Market

A major feature of the Conference will be the presentation of IMA awards for excellence in Mg die casting and display of past award-

winning examples. CWM has won this award, which promotes new die casting applications, many times in the past.

Die Casting Now Leads All Mg Usage

Among the magnesium end-use categories, die casting was estimated as the single largest usage category in 2005, and appears on track for continued growth in both the automotive and non-automotive markets.

Magnesium die casting is growing at nearly twice the rate of overall Mg consump-

(Continued on page 2)

QA's Zofia Legut Soars to CWM's Eagle Award



Zofia Legut, WGT and 2005 Eagle Award

Zofia Legut, Workmanship Standards Manager, has been chosen by her fellow CWM managers as the winner of the 2005 Eagle Award, presented to the manager who best personifies the CWM mission statement.

She is the first member of the QA Dept. to be so honored. She joined CWM in 1979. Among the comments of her fellow managers nominating her for the Award are:

Extremely disciplined and above all a

(Continued on page 3)

CWM Honors
EMPLOYEES OF
THE MONTH

These CWM employees have been honored as Employees of the Month.

October '06: Aleksander Ozog

As a member of the maintenance team, Alex has been key to accelerating the preventive maintenance (pm) program in both the magnesium and aluminum departments. His respectful and easy-going attitude have helped him achieve his goals.



Aleksander Ozog

November '05: Mieczca Konieczna

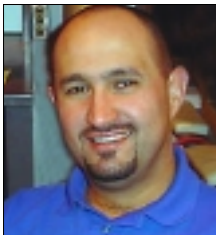
A caring member of the maintenance department, Mieczca holds herself to a high standard and is constantly trying to think of ways to do better. CWM has benefited from her perfectionism, gracious approach and service-oriented attitude for 27 years.



Mieczca Konieczna

December '05: Jose (Rambo) Ruiz

Rambo's role in training new members of the CNC machining division has contributed a great deal to its smooth operation. He has also been a major player on the safety committee, helping to improve the work environment for all CWMers plant-wide..



Jose Ruiz

January '06: Henry Kowalski

A member of the tool and die department, Henry has been praised for his focus on both external and internal CWM customers as well as his excellent welding skills. He is frequently in touch with other departments to coordinate work on a particular project. ■



Henry Kowalski

New CNC Technologies Fixture Positioning System Promises Cuts up to 50% in Fixture Set-up Times

CWM Lends IMA Support in Growing the Mg Market

(Continued from page 1)

tion, according to data presented at the 2005 IMA World Conference in Berlin.

Walter, who is also a member of the executive committee, serves with two other CWMers as active participants in programs of the IMA:

John Stocker, D.C. Committee Chair

Serving on the IMA's Die Caster Committee, John facilitates custom die caster seminars and the publication of materials on Mg die casting operational subjects.

Tony LoCoco, Finance Chairman

Tony serves as the IMA's Finance Chairman and has been instrumental in reorganizing the association's accounting system. ■

Industry Assn. Participation Ranks High at CWM

In addition to enabling key positions at the International Magnesium Assn., Chicago White Metal personnel play an important role in the wide-ranging programs of the North American Die Casting Association:

Michael Dimitroff, VP, Sales & Mktg., is a member of NADCA's Marketing Committee charged with aggressive information programs to the original equipment market. **Michael Novesky**, Engineering Project Mgr., is a member of the Product Standards Committee tasked with continuing review and upgrading of industry product specification standards.

Michael Zwolski, maintenance team buyer, serves on the Safety Committee, with the goal of assuring best practices in die casting production operations. **Eric Treiber**, President, COO, serves on the Government Affairs Committee, and **Walter Treiber**, CEO, has held virtually every office at NADCA and its predecessor organizations, and, among his many awards and recognitions, holds a NADCA Distinguished Life Membership Award.

The bottleneck of machining fixture set-up time and costs has always stood in the way of achieving the full performance benefits from today's advanced CNC machining centers. While stock locating plate sets are available to aid this important set-up operation, they are too limited in flexibility for all but a few machines to provide the solution sought by Brian Andrews, V.P., Production, of CWM's CNC Machining Division.

An Improved CNC Set-up Solution

Through careful research and a unique design solution, Jeff Paul, CNC Machining Production Manager, has developed a custom CNC machining center locating plate-rail device that has demonstrated fixture set-up time reductions of up to 50% on repeat machining runs—from the start of fixture placement to completion of first-piece production for inspection.



Using the new system, a machining fixture can now be rapidly placed on the center's machining table with assurance that it will be in the identical location position used during the initial machining production run.

Flexibility to Fit Most CNC Centers

At the same time the new fixture positioning concept provides significantly reduced set-up time, the design offers a flexible geometry that allows it to be installed in virtually all of the machining centers in the division, which was not possible with the standardized grid fixture plates currently available.

CWM's Lean Manufacturing Program

Development of this new approach to fixture positioning is part of CWM's program of instituting lean manufacturing concepts in every phase of plant production.

Construction and installation of the CNC plate-rail positioning system, now being used successfully in two centers, will be proceeding immediately to all but two special CNC machining centers in the division.

For more on CWM lean manufacturing developments, see page 3. ■

10 Veterans Receive 10- to 25-year CWM '05 Service Awards

New Developments AT CWM



As part of CWM's program of implementing lean manufacturing initiatives and enhancing die casting design guidance to its OEM customers, the following new developments deserve noting.

Al & Mg Die Casting Depts. are installing advanced reciprocating die spray units in department-wide 30- to 60-day cycles, reported Bill Baraglia, V.P., Mfrg. These new generation die release applicators offer far greater die spray precision, faster machine cycle times and lower equipment maintenance costs.

To meet the needs of increased production volumes, the **CNC Machining Division** has installed a new state-of-the-art vertical machining center, Brian Andrews, V.P., CNC Production, announced. At the same time, the **Secondary Machining Dept.**, under the supervision of Ted Bystryk, Machining Operations Mgr., has added two vertical machining centers as part of a new dedicated machining cell.

The **Engineering Dept.** has expanded the utilization of its advanced Magmasoft® die casting process simulation system, said John Stocker, V.P., Engrg., on projects which require detailed projections of die fill prior to die construction.

Web Marketing through CWM's newly designed website, Mike Dimitroff, V.P., Sales & Mktg. reported, now makes available 40 design guides and bulletins downloadable by OEMs from the site's new *Resource Center*. Go to: www.cwmdiecast.com ■

New CWM Ad to Feature High-Tech Mg Parts for New Medical Imager

The new Horizon® multi-media printer for medical imaging from CWM customer Codonics has revolutionized diagnostic reproduction in radiology and MRI departments. Each printer contains two critical CWM hot-chamber Mg die castings, and will be the subject of an upcoming full-page, full-color ad aimed at design engineers. ■



Juan Gonzalez, 15 yrs.



Ryszard Janeczek, 15 yrs.

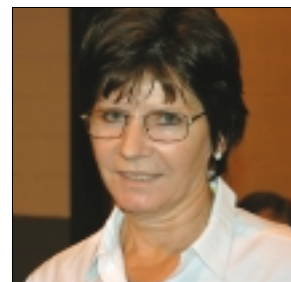
(Continued from page 1)

Ludwik Kulig, CNC Division; Jose Palma, CNC Division; and Jeffrey Paul, CNC Division.

The service awards, consisting of gifts chosen by each recipient, were presented by CEO Walter Treiber. ■



Gustavo Martinez, 15 yrs.



Anna Twarowski, 15 yrs.



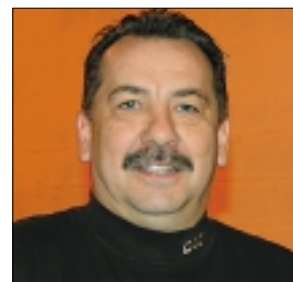
Glenda Baker, 10 yrs.



Ludwik Kulig, 10 yrs.



Jose Palma, 10 yrs.



Jeffrey Paul, 10 yrs.

Eagle to Zofia Legut

(Continued from page 1)

professional. A member of the managerial CWM team for the last 10 plus years, she continually provides ideas that influence the overall quality of the part.

Does not shy away from any challenge or task that is put in front of her.

Tirelessly works long hours every day, usually arriving before her peers. She stands up for what she believes in, a challenge in a male-dominated company.

Zofia's relentless dedication to guard product quality has benefited internal and external customers. She spends quality time with her team which is evident in the results her team provides. Her attitude and dedication encourage growth and motivates others. ■



Things You'd Like to Know

ABOUT CWMers

Tony LoCoco, CFO & Executive V.P., told us that he and his two daughters have started an ambitious summer camp program for boys and girls ages 4 to 18. The purpose of the camp is to work with children who are overweight and have type 2 diabetes due to being overweight. This year the camps will be located at the campuses of Pepperdine University on the West coast and Wake Forest on the East coast. For more, visit the Camp Glucose website at: www.campglucose.com/

What would you like us to know? Share your special activities with "Inside CWM." Send details to Anne Andrews or Email her at: aandrew@cwmml.com