



Inside CWM is published by Chicago White Metal Casting, and its CNC Machining and Contract Manufacturing Divisions, for all of our employees and for our sales representatives and supplier partners who are equally vital to our success. Visit us at: www.cwmdiecast.com/ www.cnc-technology.com/ www.cwm-contractmfrg.com/ CWM is located near O'Hare International Airport in Bensenville, IL U.S.A.

Committed to Total Customer Satisfaction with CWM's ISO 9001 & ISO 14001 Registered Management Systems: Excellence is Expected
Website: www.cwmdiecast.com

Unprecedented 4 Awards of Excellence from NADCA & IMA in 2009 CWM Adds to 3 NADCA Awards with the IMA's Outstanding Mg Processing Award



Mg die cast mirror support, with assembled and finished self-dimming mirror

A new Mg die cast support for the advanced Gentex self-dimming automotive mirror is being produced with all part trimming operations eliminated. CWM is

using "in-die" degating, two-stage ejection technology resulting in lower piece-part costs, plus elimination of the trim die at a



Josh Owen, Mechanical Design Engineer, Gentex (right), & Mike Novesky, CWM Project Engineer.

20% die build savings. At the same time, a tolerance of +/-0.1 mm at the ball end is required for smooth operation in use. The magnesium die design strategy, borrowed from miniature Zn "no-trim" die cast tooling, is being used for the first time in a high-

pressure, hot-chamber mag die casting machine, winning the IMA's 2009 Mg Processing Technology Award.

NADCA '09 Al Award Winner (2.3 lb) Overcoming Challenging Die Fill

This baseplate control support platform for an advanced dental workstation from A-dec created a challenging die fill: detailed features over



Patrick Berry, New Product Design Engineer, A-dec (right), & CWM President Eric Treiber.

a 6 in. length across the structure's 8.5 in. center width restricted edge-to-edge metal flow. CWM employed Magmasoft simulation software for the optimum gating design.



Al baseplate support

NADCA '09 Mg Award Winner (2.2 lb) Flatness Over a 20 in. Length



Mg imager side walls

assured cassette alignment, with wall flatness held as-cast to at or under 0.032 in. A proprietary system for direct injection into the die casting eliminated edge gating.

NADCA '09 Al Award Winner (0.14 lb) Critical Dimensional Accuracy

An aluminum die cast model of the Gentex self-dimming automotive rearview mirror support won an award for Al die casting excellence based on its cast integrity and dimensional accuracy. The ball end of the support is held to a tolerance of +/-0.1 mm over long production runs, required to provide years of trouble-free operation in use through wide changes in temperature and humidity. Plastics could not meet the vibration requirements. ■



Al mirror support

50th Year Celebration of the Die Casting Industry Career of Walter Treiber

Employee associates, former employees, long-time sales reps, suppliers, industry friends and colleagues, as well as his wife Carolyn and his extended family of four children and many grandchildren gathered at CWM in a surprise June celebration of CEO Walter Treiber's career. The event highlighted the beginning of his 50th year devoted to the industry and the organization he loves.



WT, circa 1970

Heartfelt toasts were made. Milestones in technology advancements, awards and association activities that have helped grow the die casting industry were noted in a moving speech by his son Eric, as CWM president and COO the third Treiber generation to lead the company.



WT today

Founded in a Chicago loft above a fish market in 1937 by Walter Treiber, Sr., under his son's leadership CWM has grown to a state-of-the-art 136,000 sq. ft. plant and office facility serving leading high-technology OEMs worldwide. ■

Jon Miller, Director of Sales

Jonathan Miller, appointed CWM Director of Sales, is responsible for all sales activities including managing the company's sales-engineers serving OEMs from major cities in the U.S., as well as Canada and Mexico. Jon has 24 years of experience in the die casting industry, including 20 years in sales and engineering for one of the largest custom magnesium die casters in North America. ■



Jonathan Miller

CWM Honors
EMPLOYEES OF THE MONTH

These CWM employees have been honored as Employees of the Month.

February '09: Casey Walat (2007)



Casey Walat

Casey has become the "go-to" member of the tooling department for major trim tool repairs and rebuilding, improving throughput rates and increasing customer satisfaction.

March '09: Javier Sanchez (2008)

Javier is a dedicated member of the set-up team in the aluminum department. He does an excellent job helping monitor and reduce set-up times in general, enabling CWM to improve lead-time.



Javier Sanchez

April '09: Barbara Pazdan (1979)



Barbara Pazdan

Well-versed over the broad spectrum of the machining and sub-assembly operations, Barbara's focus on quality has contributed immensely to her team's achievements.

May '09: Janusz Niemczura (2007)

Janusz, a tooling department member, is noted for both his flexibility in adjusting to unpredictable customer schedule changes and for his energy and exuberance on the job.



Janusz Niemczura

June '09: Beata Avila (2000)



Beata Avila

In a period of transition in the purchasing department, Beata has been a key player, doing data entry for sales, purchasing and engineering, updating work instructions, and managing critical files.

CWM Engineers Great Outing Despite Rain Delay

CWM's 29th Annual Golf Outing was held on June 13 at Bloomingdale Golf Club and "patience" (2 1/2 hr. rain delay) and "technology" (real-time weather radar & all-points cell phone contact) were key. At the 11:30 shot-gun start (the first in the Outing's history) all players had the sun and the entire course to themselves, finishing together for the evening dinner and special raffle.

The day's lowest score was a 79 by Pablo Zalduendo, Z Group Financial. "Closest-to-the-Pin" prizes were: Hole #6, Ken Mrock, Chicago Bears, 9' 5"; Hole #9, Harlan Krafft, ASG Staffing, 29' 5"; Hole #11, Fred Loots, CWM, 11' 2"; Hole #13, Fred Kovacs, All Star

Tool & Mold, 16'; and Hole #16, Pablo Zalduendo, 7' 6". Each winner received a "Lettuce Entertain You" gift certificate. ■



CWM NPI Tom Mrock, from greeter to weather radar checker to cell phone notifier, overcame a 2.5 hr. delay & launched a shot-gun start with all golfers finishing 18 holes at once.



Health Fair for All CWMers to be Hosted on Oct. 8

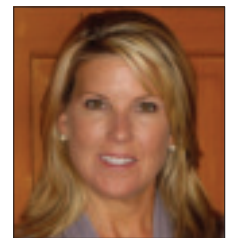
All employees are invited to the company's first Health Fair for the latest in helpful programs on personal nutrition, fitness and weight management. Friendly, knowledgeable representatives of participating organizations will be available in the plant's 2nd floor classroom Thurs., Oct. 8, 11 am to 3 pm.

There will be a free flu shot available for each employee. Among other participants will be Weight Watchers, with a special program offer underwritten by CWM; Employee Resource Service; the Bensenville Park District and Aflac. Walter Treiber strongly encourages all employees to attend this valuable company-wide event. ■

Sourcing Technologies is New CWM CA, AZ, NV Rep



Troy Alexander



Kristin Currey

To serve original equipment manufacturers on behalf of Chicago White Metal Casting in California, Nevada and Arizona, CWM has announced the appointment of Sourcing Technologies as its Sales-Engineering Representative for the three states.

Troy Alexander, the firm's owner, and associate Kristin Curry bring over 23 years of combined experience in the objective evaluation and application of today's production technologies to custom engineered OEM components.

Troy, born and raised in California, lives currently in San Diego with his wife Jeannie. His daughter attends Cal State College in San Marcos. He is serving CWM in Central and So. California, and Arizona.

Kristin is a long-time resident of California and has been a manufacturer's rep in the western states for 13 years. She is serving CWM in No. California, as well as Nevada.

For full contact information, see the CWM Rep Locator online at:

www.cwmdiecast.com/salesengrs.htm/

July '09: Manrique Barrera (1998)

Production team member Manny has helped CWM organize and computerize information on die cast and trim tools. His bilingual skills help him fulfill a leadership role.



Manrique Barrera

August '09: Zbigniew Klamczynski (1979)



Zbig Klamczynski

Traffic department member Zbig plays a critical role in training new members in the varied requirements of customers and suppliers, as well as CWM's own procedures. ■